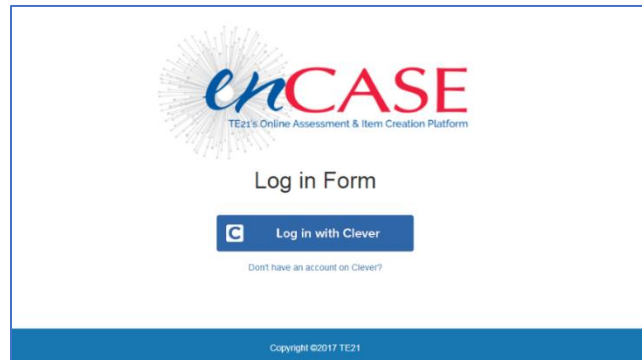




enCASE Student Experience Overview

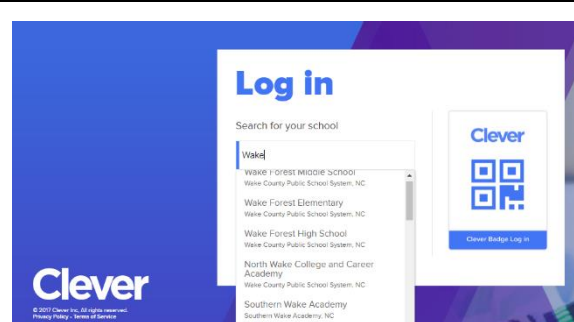
Step One: for users without Clever portal access <https://encase.te21.com>



Step Two: Log In (there are two log in options)

Option 1: Clever Supported Login

- Use the Clever login method set up by your district

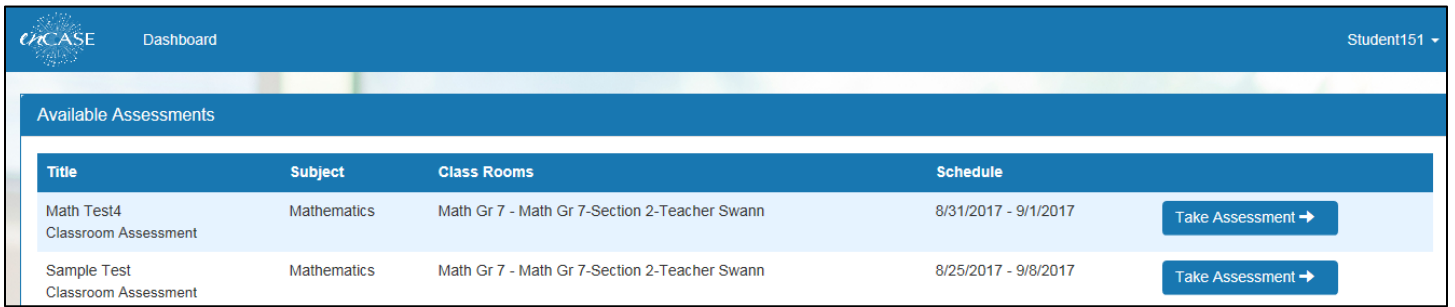


Option 2: Non-Clever Login

- Click "Don't have an account on Clever"
- Enter your credentials
- Choose your district
- Click Login



Step Three: Student Login Experience



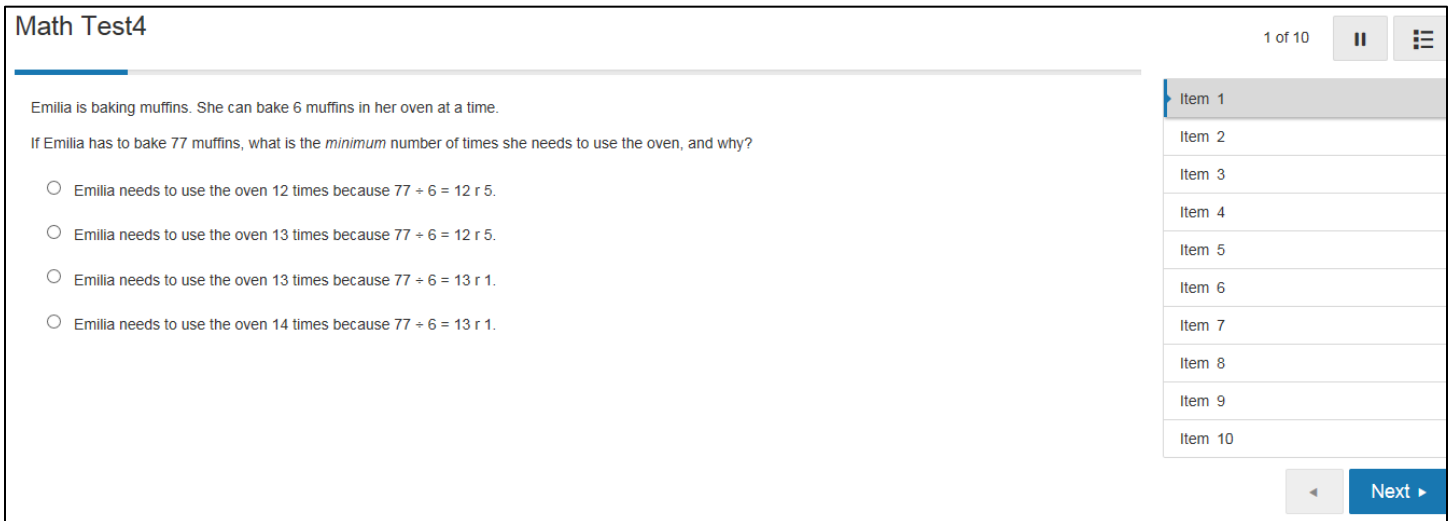
The screenshot shows a student dashboard with a blue header containing the 'CASE' logo, 'Dashboard', and 'Student151'. Below the header is a section titled 'Available Assessments' which contains a table with the following data:

Title	Subject	Class Rooms	Schedule	
Math Test4 Classroom Assessment	Mathematics	Math Gr 7 - Math Gr 7-Section 2-Teacher Swann	8/31/2017 - 9/1/2017	Take Assessment →
Sample Test Classroom Assessment	Mathematics	Math Gr 7 - Math Gr 7-Section 2-Teacher Swann	8/25/2017 - 9/8/2017	Take Assessment →

- Students will be viewing their student dashboard when they first login.
- Any available assessments will be visible on this screen. A blank screen indicates there are no assessments assigned to the student.
- When the student is ready to take an assessment, they click the blue **Take Assessment** button to the right of the assessment name.
- The student will be taken to a staging screen that will prompt them to click on the blue **Start** button when they are ready to begin their assessment.



Step Four: Student Testing Experience



The screenshot shows a testing interface for 'Math Test4'. The page title is 'Math Test4' and it indicates '1 of 10' items. The question text is: 'Emilia is baking muffins. She can bake 6 muffins in her oven at a time. If Emilia has to bake 77 muffins, what is the *minimum* number of times she needs to use the oven, and why?'. There are four multiple-choice options, each with a radio button:

- Emilia needs to use the oven 12 times because $77 \div 6 = 12 \text{ r } 5$.
- Emilia needs to use the oven 13 times because $77 \div 6 = 12 \text{ r } 5$.
- Emilia needs to use the oven 13 times because $77 \div 6 = 13 \text{ r } 1$.
- Emilia needs to use the oven 14 times because $77 \div 6 = 13 \text{ r } 1$.

On the right side, there is a list of items from 'Item 1' to 'Item 10', with 'Item 1' selected. At the bottom right, there are navigation buttons: a left arrow, a 'Next' button with a right arrow, and a menu icon.

"The Cry of the Dreamer"

"The Cry of the Dreamer"
by John Boyle O'Reilly

John Boyle O'Reilly was an Irish-born poet and fiction writer who later immigrated to the United States.

I am tired of planning and toiling
In the crowded hives of men,
Heart-weary of building and spoiling,
And spoiling and building again,
5 And I long for the dear old river,
Where I dreamed my youth away;
For a dreamer lives forever,
And a toiler dies in a day.

I am sick of the showy seeming,
10 Of life that is half a lie;
Of the faces lined with scheming
In the throng that hurries by;
From the sleepless thought's endeavour
I would go where the children play;
15 For a dreamer lives forever,
And a thinker dies in a day.

Select two quotations from the poem that *best* support the idea that the speaker is unhappy and withdrawn from society.

"For a dreamer lives forever,
And a toiler dies in a day." (lines 7-8)

"I am sick of the showy seeming,
Of life that is half a lie;" (lines 9-10)


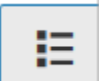
"There is nothing sweet in the city" (line 19)


"Oh, the little hands too skillful," (line 21)

"And the meadows' kindly page." (line 28)

Item 1
Item 2

◀ Next ▶

- Test questions will reside on the left side of the page and item number on the right.
- Students will be asked to supply answers for each question. Once the question has been answered, the item number on the right will change from white to gray.
- If students need to skip an item, they can click the blue next button at the bottom right side of the screen. Or can return to a previous item using the arrow key.
- Students can pause their assessment 
 - Note that the pause button is designed to pause the test temporarily. Please make sure that your students click the logout button in the top right-hand corner of the screen before they completely close their browser window.
- Assessments can also be viewed full screen 
- When a calculator active question appears, the student will see a calculator option appear above the question.

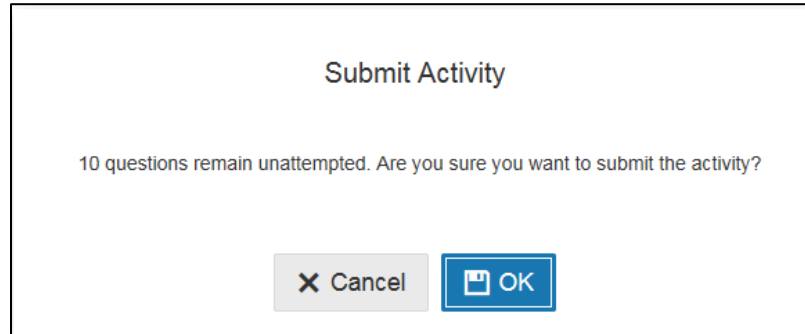
 Calculator

How many times greater is the value of the 2 in 628,730 than the value of the 2 in 872,590?

- Student can activate their calculator by clicking on the calculator button.
- The student can also move their calculator by clicking and dragging the calculator tool.

Step Five: Finalizing Student Testing Experience

- When the student clicks on the last item of the assessment, the blue next button will change to a **Finish** button.
- When the finish button is selected, the student will be rerouted to one more “quick check” screen to make sure that they are ready to submit their assessment. If there are questions that were not answered, students will be warned on this screen.



- At this point the student can go back to the assessment by selecting *Cancel*
- The student can submit their assessment for grading, by clicking the blue OK button.

Teachers should now refer to the Reports Overview Helper Sheet or the Reports Video for more information on how to obtain report data.